



# Submittal Data Information

101-077

## Model 007-IFC® Cartridge Circulator

Effective: April 1, 2006

Supersedes: March 15, 2004

Job: \_\_\_\_\_ Engineer: \_\_\_\_\_ Contractor: \_\_\_\_\_ Rep: \_\_\_\_\_

ITEM NO.	MODEL NO.	IMP. DIA.	G.P.M.	HEAD/FT.	H.P.	ELEC. CHAR.

### Features

- Integral Flow Check (IFC®)
  - Simplifies piping
  - Prevents gravity flow / reverse flow
  - Eliminates separate in-line flow check
  - Reduces installed cost
  - Improves system performance
  - Easy to service
- Unique replaceable cartridge-Field serviceable
- Unmatched reliability-Maintenance free
- Quiet, efficient operation
- Self lubricating, No mechanical seal
- Wide range of applications
- Cast Iron or Bronze construction, Flanged connections

### Materials of Construction

Casing (Volute): Cast Iron or Bronze

Integral Flow Check (IFC®):

Body, Plunger....Acetal

O-ring Seals.....EPDM

Spring.....Stainless Steel

Stator Housing: Steel

Cartridge: Stainless Steel

Impeller: Non-Metallic

Shaft: Ceramic

Bearings: Carbon

O-Ring &amp; Gaskets: EPDM

### Model Nomenclature

F – Cast Iron, Flanged

BF – Bronze, Flanged

IFC – Integral Flow Check

#### Variations:

Z – Zoning Circulator

VR – Variable Speed Outdoor Reset

VS – Variable Speed Set Point

VV – Variable Speed Variable Voltage

J – Bronze Cartridge with Cast Iron Casing

### Performance Data

Flow Range: 0 - 12.5 GPM

Head Range: 0 - 11 Feet

Minimum Fluid Temperature: 40°F (4°C)

Maximum Fluid Temperature: 240°F (115°C)

Maximum Working Pressure: 125 psi

Connection Sizes: 3/4", 1", 1-1/4", 1-1/2" Flanged

**FOR INDOOR USE ONLY**

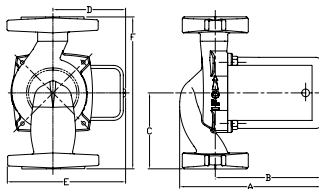
### Application

- Hydronic Heating/Cooling
- Radiant
- Indirect Water Heaters
- Hydro-Air Fan Coils
- Domestic Water Recirculation (Bronze only)

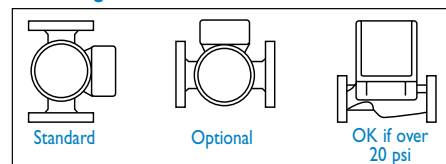
The 007-IFC is designed to simplify piping, reduce installation costs and improve system performance when zoning with "00" circulators. By locating the IFC inside the pump, a separate in-line flow check is eliminated. The low pressure drop of the IFC increases flow performance vs. in-line flow checks. Both the IFC and the cartridge are easily accessed for service.

### Pump Dimensions & Weights

Model	Casing	A		B		C		D		E		F		Ship Wt.	
		in.	mm	in.	mm	in.	mm	in.	mm	in.	mm	in.	mm	lbs.	Kg
007-FS-I IFC	Cast Iron	6	152	4-1/2	114	3-3/16	81	2-15/16	75	5	127	6-3/8	162	9	4.0
007-BFS-I IFC	Bronze	6	152	4-1/2	114	3-3/16	81	2-15/16	75	5	127	6-3/8	162	9	4.0
007-ZFS-I IFC	Cast Iron	6	152	4-1/2	114	3-3/16	81	3-5/8	92	5-9/16	143	6-3/8	162	9	4.0
007-ZBFS-I IFC	Bronze	6	152	4-1/2	114	3-3/16	81	3-5/8	92	5-9/16	143	6-3/8	162	9	4.0



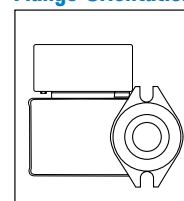
### Mounting Positions



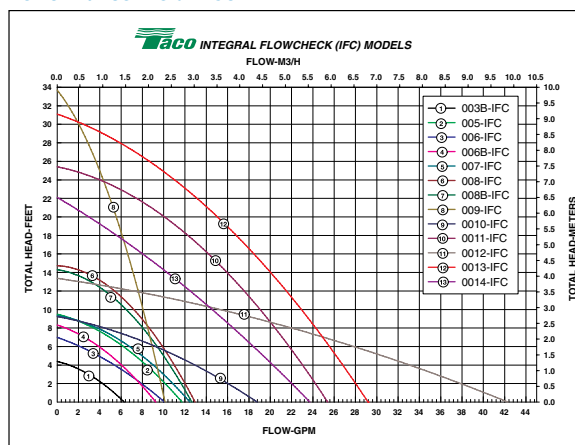
### Electrical Data

Model	Volts	Hz	Ph	Amps	RPM	HP
Cast Iron	115	60	1	.71	3250	1/25
Bronze	115	60	1	.76	3250	1/25
Motor Type	Permanent Split Capacitor Impedance Protected					
Motor Options	220/50/1, 220/60/1, 230/60/1, 100/110/50/60/1					

### Flange Orientation



### Performance Field - 60Hz

**Do it Once. Do it Right.®**

TACO INC., 1160 Cranston Street, Cranston, RI 02920 Telephone: (401) 942-8000 Fax: 942-2360

TACO (Canada), Ltd., 6180 Ordan Drive, Mississauga, Ontario L5T 2B3 Telephone: (905) 564-9422 Fax: (905) 564-9436

Visit our website at: [www.taco-hvac.com](http://www.taco-hvac.com)

Printed in USA

Copyright 2006

TACO, Inc.